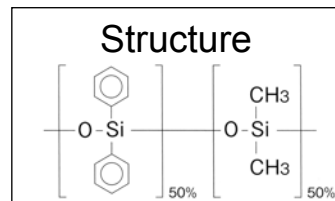




# HICAP CAPILLARY GC COLUMNS

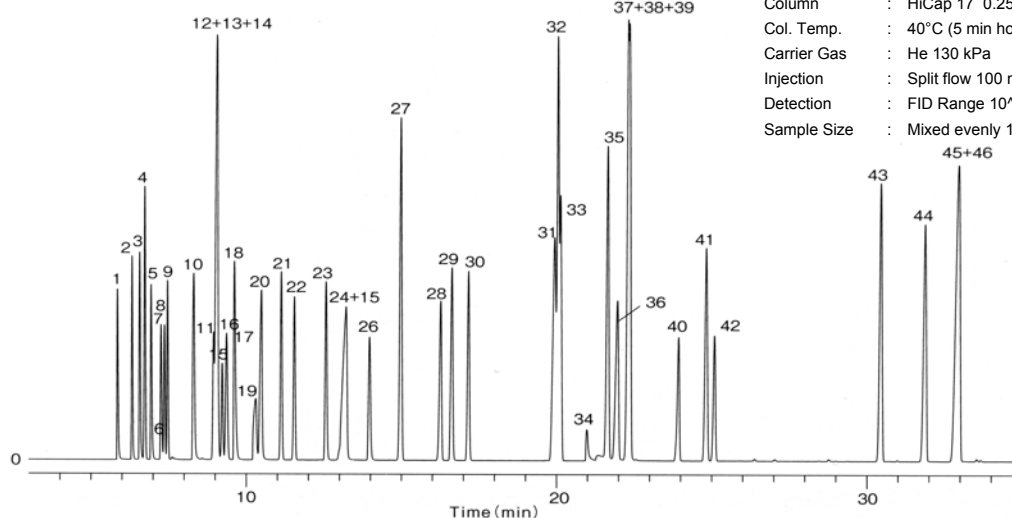
## HiCap 17

- 50% Phenyl-50% Methylpolysiloxane
- USP phase G3
- Medium polarity
- Cross-linked



HiCap 17 is a medium polarity column, incorporating 50% phenyl and 50% methylpolysiloxane. It has a maximum temperature limit of 300°C to 320°C for isothermal analyses and 320°C to 340°C for temperature programmed analyses, depending on film thickness. The phase has a stronger polarity than HiCap 35 and is ideal for general and pesticide analyses.

### Organic solvents



System : GC/FID  
 Column : HiCap 17 0.25mm I.D. X 60m df=0.25µm  
 Col. Temp. : 40°C (5 min hold) - 4°C/min - 230°C (5 min hold)  
 Carrier Gas : He 130 kPa  
 Injection : Split flow 100 mL/min 250°C  
 Detection : FID Range 10<sup>11</sup> 250°C  
 Sample Size : Mixed evenly 1.0 µL

|                               |                              |                           |                            |                               |
|-------------------------------|------------------------------|---------------------------|----------------------------|-------------------------------|
| 1. Methanol                   | 11. cis-1,2-Dichloroethylene | 21. 1,2-Dichloroethane    | 31. p-Xylene               | 41. Cyclohexanone             |
| 2. Ethyl ester                | 12. Methyl ethyl ketone      | 22. Trichloroethylene     | 32. m-Xylene               | 42. 1,1,2,2-Tetrachloroethane |
| 3. i-Propanol                 | 13. i-Butanol                | 23. n-Propyl acetate      | 33. Chlorobenzene          | 43. o-Dichlorobenzene         |
| 4. n-Hexane                   | 14. Ethyl acetate            | 24. i-Amyl alcohol        | 34. N,N-Dimethyl formamide | 44. o-Cresol                  |
| 5. Acetone                    | 15. Chloroform               | 25. Ethyl cellosolve      | 35. o-Xylene               | 45. p-Cresol                  |
| 6. Carbon disulphide          | 16. 1,1,1-Trichloroethane    | 26. 1,4-Dioxane           | 36. 1-Methylcyclohexanol   | 46. m-Cresol                  |
| 7. Methyl acetate             | 17. Carbon tetrachloride     | 27. Toluene               | 37. Cyclohexanol           |                               |
| 8. Dichloromethane            | 18. Tetrahydrofuran          | 28. Tetrachloroethylene   | 38. Butyl cellosolve       |                               |
| 9. trans-1,2-Dichloroethylene | 19. Methylcellosolve         | 29. Methyl-n-butyl ketone | 39. Styrene                |                               |
| 10. 2-Butanol                 | 20. n-Butanol                | 30. n-Butyl acetate       | 40. Cellosolve acetate     |                               |

### HiCap 17

| i.d. (mm) | Length (m) | Film Thickness (µm) | Part Number       |
|-----------|------------|---------------------|-------------------|
| 0.25      | 15         | 0.25                | HI17-0.25-15-0.25 |
|           |            | 0.15                | HI17-0.25-30-0.15 |
|           | 30         | 0.25                | HI17-0.25-30-0.25 |
|           |            | 0.25                | HI17-0.25-60-0.25 |
| 0.32      | 30         | 0.15                | HI17-0.32-15-0.25 |
|           |            | 0.25                | HI17-0.32-30-0.25 |
|           | 60         | 0.25                | HI17-0.32-60-0.25 |
| 0.53      | 15         | 1.00                | HI17-0.53-15-1.00 |
|           | 30         | 1.00                | HI17-0.53-15-1.00 |