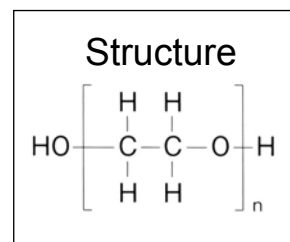




HICAP CAPILLARY GC COLUMNS

HiCap WAX ETR

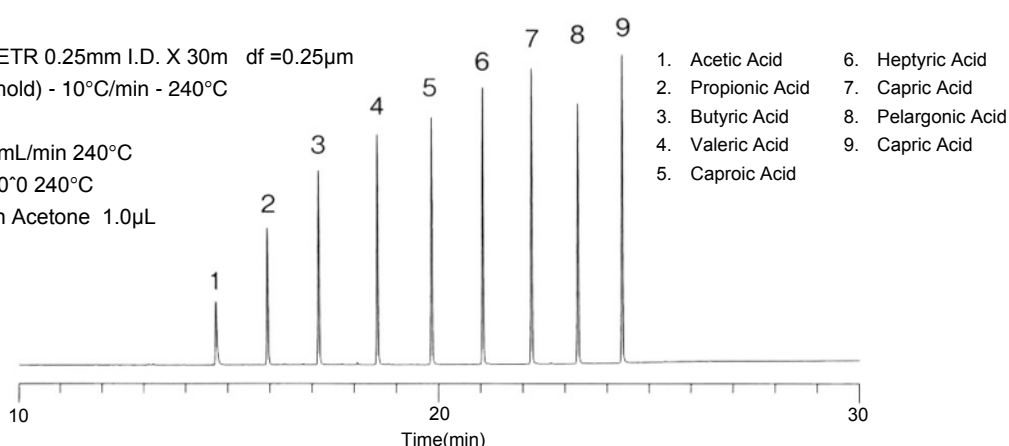
- Polyethylene glycol (PEG)
- USP phase G16
- Polar
- Cross-linked



HiCap WAX ETR is a high polarity column based on polyethylene glycol and corresponds to USP G16. It offers increased heat resistance, with maximum temperatures up to 270°C for isothermal analyses and 280°C for temperature programmed analyses (for 0.25µm film thickness). It is a good choice for the analysis of polar samples such as solvents and also for high-boiling compounds. The example below shows the analysis of short chain fatty acids.

Short-chain fatty acids

System : GC/FID
Column : HiCap WAX ETR 0.25mm I.D. X 30m df=0.25µm
Col Temp. : 40°C (5 min hold) - 10°C/min - 240°C
Carrier Gas : He 100kPa
Injection : Split flow 50 mL/min 240°C
Detection : FID Range 10⁰ 240°C
Sample Size : 1000µg/mL in Acetone 1.0µL



HiCap WAX ETR

i.d. (mm)	Length (m)	Film Thickness (µm)	Part Number
0.25	30	0.25	HIWAXETR-0.25-30-0.25
		0.50	HIWAXETR-0.25-30-0.50
	60	0.25	HIWAXETR-0.25-60-0.25
		0.50	HIWAXETR-0.25-60-0.50
0.32	30	0.25	HIWAXETR-0.32-30-0.25
		0.50	HIWAXETR-0.32-30-0.50
	60	0.25	HIWAXETR-0.32-60-0.25
		0.50	HIWAXETR-0.32-60-0.50
0.53	15	1.00	HIWAXETR-0.53-15-1.00
	30	1.00	HIWAXETR-0.53-30-1.00
	60	1.00	HIWAXETR-0.53-60-1.00