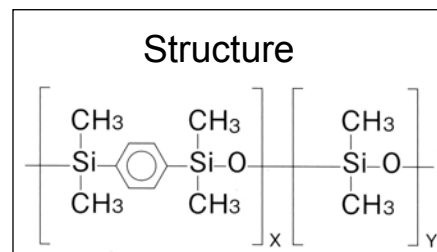




HICAP CAPILLARY GC COLUMNS

HiCap PE

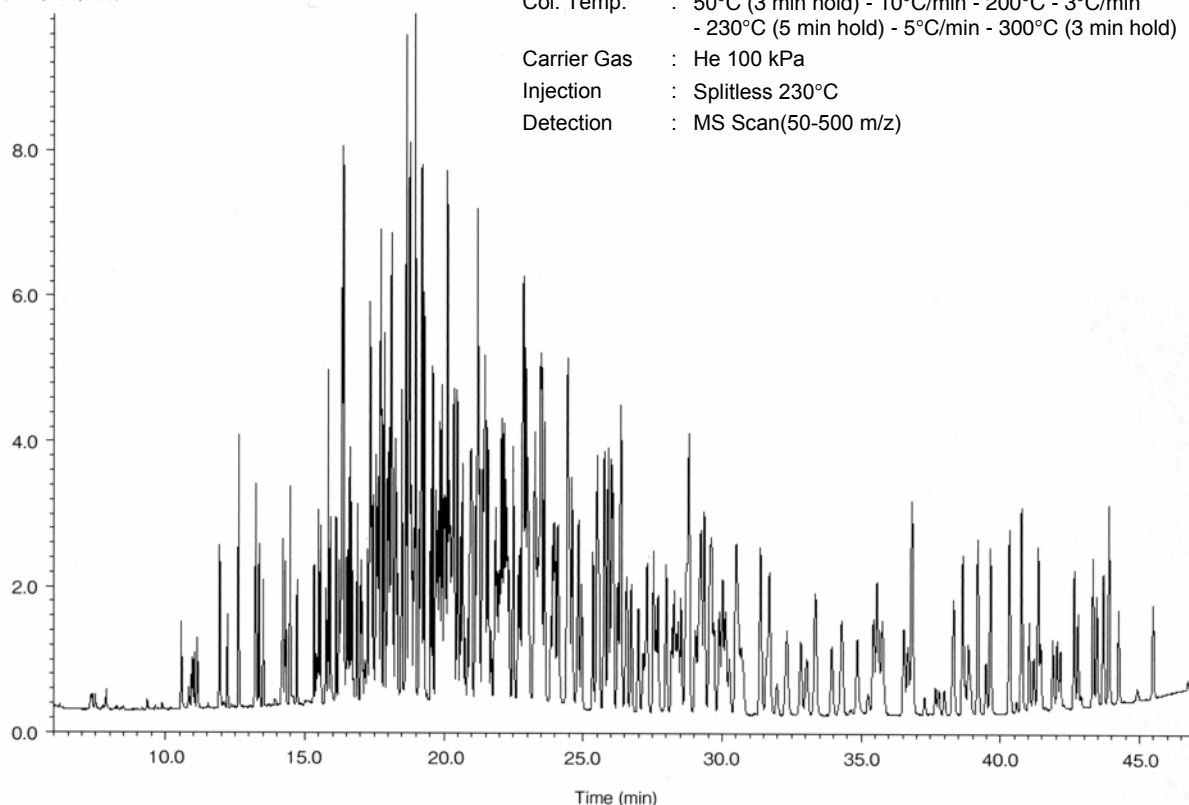
- 5% Phenyl-95% Methylpolysilarylene
- USP phase G27
- Low polarity
- Cross-linked
- Ultra low bleed



HiCap PE is specifically designed for the analysis of pesticides by GC-MS, as it exhibits very low bleed. It has a maximum temperature limit of 325°C for isothermal analyses and 350°C for temperature programmed analyses.

324 Pesticides

(× 1,000,000)



System : GC/MS
Column : HiCap PE 0.25mm I.D. X 30m
Col. Temp. : 50°C (3 min hold) - 10°C/min - 200°C - 3°C/min
- 230°C (5 min hold) - 5°C/min - 300°C (3 min hold)
Carrier Gas : He 100 kPa
Injection : Splitless 230°C
Detection : MS Scan(50-500 m/z)

HiCap PE

i.d. (mm)	Length (m)	Film Thickness (µm)	Part Number
0.25	30	-	HIPE-0.25-30-PP